

2009 Project AWARE Shuttle Schedule

The use of Project AWARE shuttle services is not required. Due to the high volume of volunteers, support vehicles, and equipment necessary for the event, parking availability at sites along the AWARE route is exceedingly limited. Therefore, the use of personal vehicles on AWARE is strongly discouraged. If personal vehicles are necessary, carpooling amongst volunteers is strongly recommended wherever possible. If the following shuttle schedules do not accommodate your needs, you must make your own arrangements.

SHUTTLE AT YOUR OWN RISK!!!

The Iowa DNR or any other cooperating agency, organization, or individual are not responsible for lost, stolen, or vandalized items or damage from tree limbs, storms, natural and/or environmental damages, or other acts of God. If you choose to leave your vehicle somewhere, you choose to do so at your own risk.

DAILY SHUTTLE SERVICE – \$20 per person per day – Shuttles depart daily at 5:00pm

Daily shuttles will be available at a cost of \$20 per person per day. This shuttle service will take participants back to the previous night's camping location only, so if you plan to participate on AWARE for multiple days, you must use and pay for the shuttle each day. Pre-registration for daily shuttles is not available – to use a shuttle you must sign up and pay onsite. **PLEASE**

NOTE:

- An e-ride board is available on the AWARE website, and a ride board will also be available onsite to help volunteers work with one another to make their own shuttle arrangements.
- Daily shuttles may not be necessary on Sunday, June 21, or Saturday, June 27, as all volunteers will be shuttled back to Pleasant Creek State Recreation Area on 6/21, and the event ends at Saulsbury Bridge Recreation Area on 6/27. Volunteers arriving on these days must simply join the AWARE group in the morning at these respective locations.

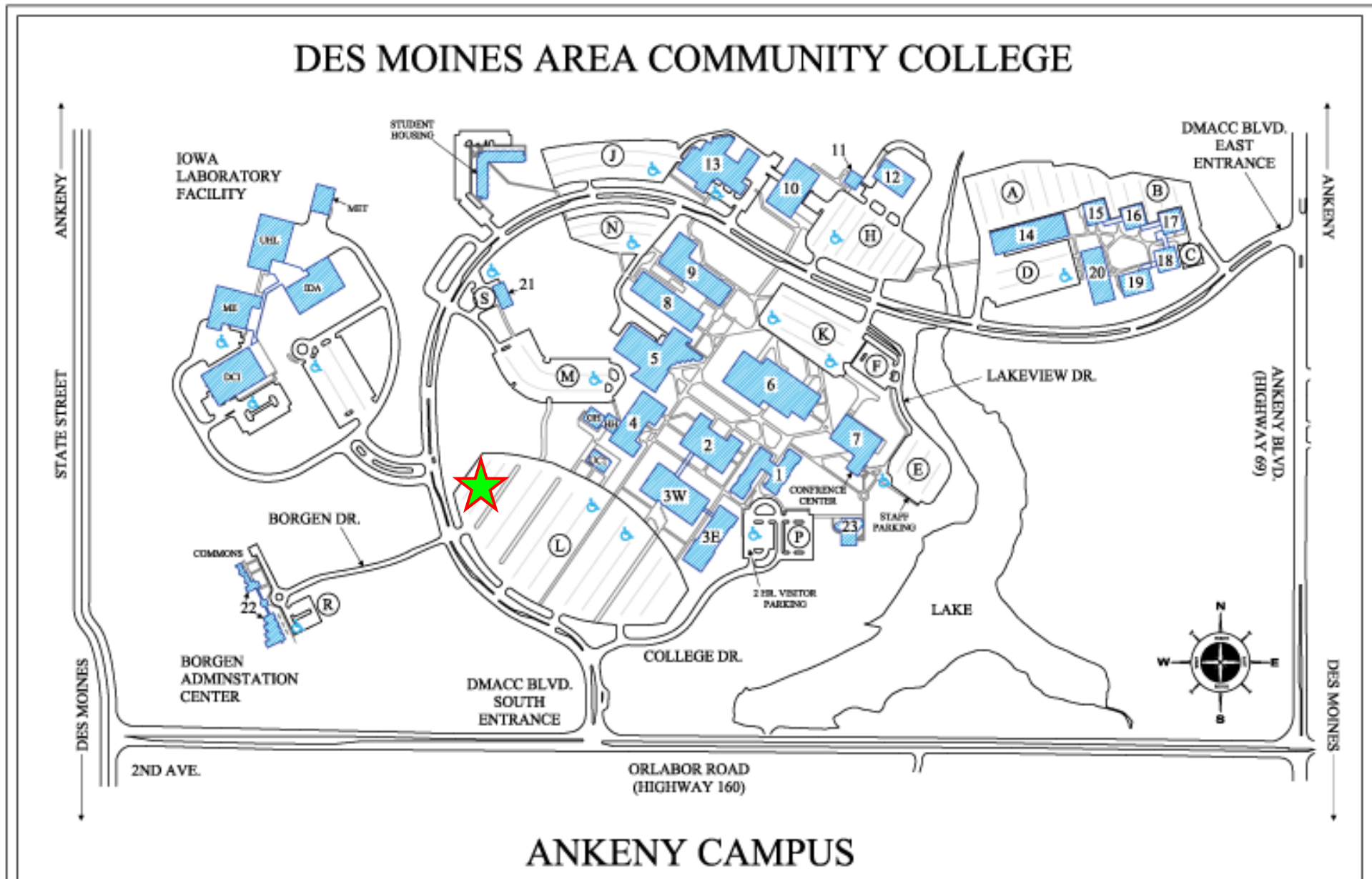
PRE/POST EVENT SHUTTLE SERVICE – Free

Three shuttle locations will be available for Project AWARE volunteers on Saturday, June 20.

- **Des Moines Area Shuttle - Shuttle leaves at 11:00 am**
 - Meet Saturday, June 20, at 10:30 am at Des Moines Area Community College Lot L Section 5 (see map on page 2).
 - Bring a lunch or eat before you arrive – lunch is not provided and we will not be stopping along the way except for emergencies.
 - Shuttle will return to Des Moines Saturday evening, June 27.
- **Muscatine Area Shuttle - Shuttle leaves at noon**
 - Meet Saturday, June 20, at 11:30 am at Saulsbury Bridge Recreation Area (see map on page 3).
 - Bring a lunch or eat before you arrive – lunch is not provided and we will not be stopping along the way except for emergencies.
- **Iowa City Area Shuttle - Shuttle leaves at 12:30 pm**
 - Meet Saturday, June 20, at 12:00 noon at University of Iowa Oakdale Campus (see map on page 4).
 - Bring a lunch or eat before you arrive – lunch is not provided and we will not be stopping along the way except for emergencies.
 - Shuttle will return to Iowa City Saturday evening, June 27.

Project AWARE Des Moines Area Shuttle Location Map

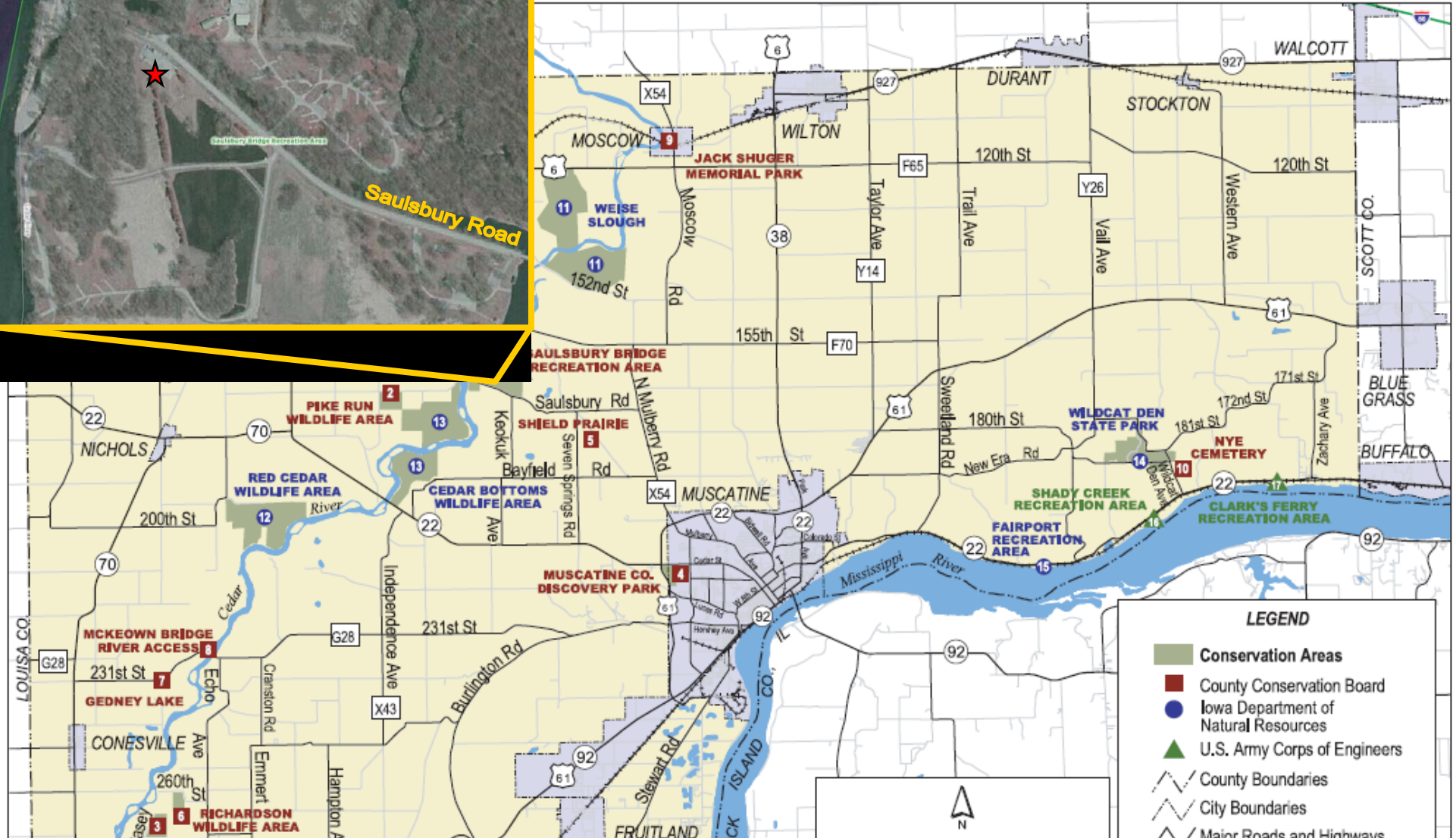
DMACC Ankeny Campus Lot L
2006 South Ankeny Boulevard, Ankeny, Iowa 50023



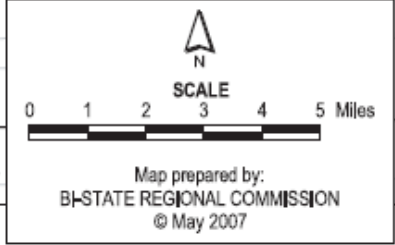
Lot L is the largest parking lot on campus. AWARE Parking is on the northwest side of Lot L Section 5 (see star). Des Moines Area Community College is not responsible for lost, stolen, or vandalized items or damage from tree limbs, storms, natural and/or environmental damages, or other acts of God. If you choose to leave your vehicle here, you choose to do so at your own risk.

Project AWARE Muscatine Shuttle Location Map

Saulsbury Bridge Recreation Area, 2007 Saulsbury Road, Muscatine, IA 52761-8406



Park in the lot by the nature lodge (see star on aerial photo). The Muscatine CCB is not responsible for lost, stolen, or vandalized items or damage from tree limbs, storms, natural and/or environmental damages, or other acts of God. If you choose to leave your vehicle here, you choose to do so at your own risk.



LEGEND

- Conservation Areas
- County Conservation Board
- Iowa Department of Natural Resources
- U.S. Army Corps of Engineers
- County Boundaries
- City Boundaries
- Major Roads and Highways
- Streets
- Railroads
- Cities
- Muscatine County
- Rivers and Lakes

Project AWARE Iowa City Shuttle Location Map



Parking lot is on the north side of Oakdale Studio A.
Use available spaces at the far-east end of the lot.

The University of Iowa is not responsible for lost, stolen, or vandalized items or damage from tree limbs, storms, natural and/or environmental damages, or other acts of God. If you choose to leave your vehicle here, you choose to do so at your own risk.

