

# 2010 Project AWARE Shuttle Schedule

The use of Project AWARE shuttle services is not required. Due to the high volume of volunteers, support vehicles, and equipment necessary for the event, parking availability at sites along the AWARE route is exceedingly limited. Therefore, the use of personal vehicles on AWARE is strongly discouraged. If personal vehicles are necessary, carpooling amongst volunteers is strongly recommended wherever possible. If the following shuttle schedules do not accommodate your needs, you must make your own arrangements.

## **SHUTTLE AT YOUR OWN RISK!!!**

The Iowa DNR or any other cooperating agency, organization, or individual are not responsible for lost, stolen, or vandalized items or damage from tree limbs, storms, natural and/or environmental damages, or other acts of God. If you choose to leave your vehicle somewhere, you choose to do so at your own risk.

## **DAILY SHUTTLE SERVICE – \$20 per person per day – Shuttles depart daily at 5:00 pm**

Due to the exceedingly limited parking availability at sites along the AWARE route, the use and daily shuttling of **personal vehicles on AWARE is strongly discouraged**. Daily shuttles, however, will be available at a cost of \$20 per person per day. This shuttle service will take participants back to the previous night's camping location only, so if you plan to participate on AWARE for multiple days, you must use and pay for the shuttle each day. Pre-registration for daily shuttles is not available – to use a shuttle you must sign up and pay onsite. **PLEASE NOTE:**

- An e-ride board is available on the AWARE website, and a ride board will also be available onsite to help volunteers work with one another to make their own shuttle arrangements.
- Daily shuttles may not be necessary on Tuesday, July 14, or Saturday, July 17, as all volunteers will be shuttled back to Cold Springs Park on 7/14, and the event ends at Porter's Lake Lutheran Center on 7/17. Volunteers arriving on these days must simply join the AWARE group in the morning at Cold Springs Park and Porter's Lake Lutheran Center, respectively.

## **PRE/POST EVENT SHUTTLE SERVICE – Free**

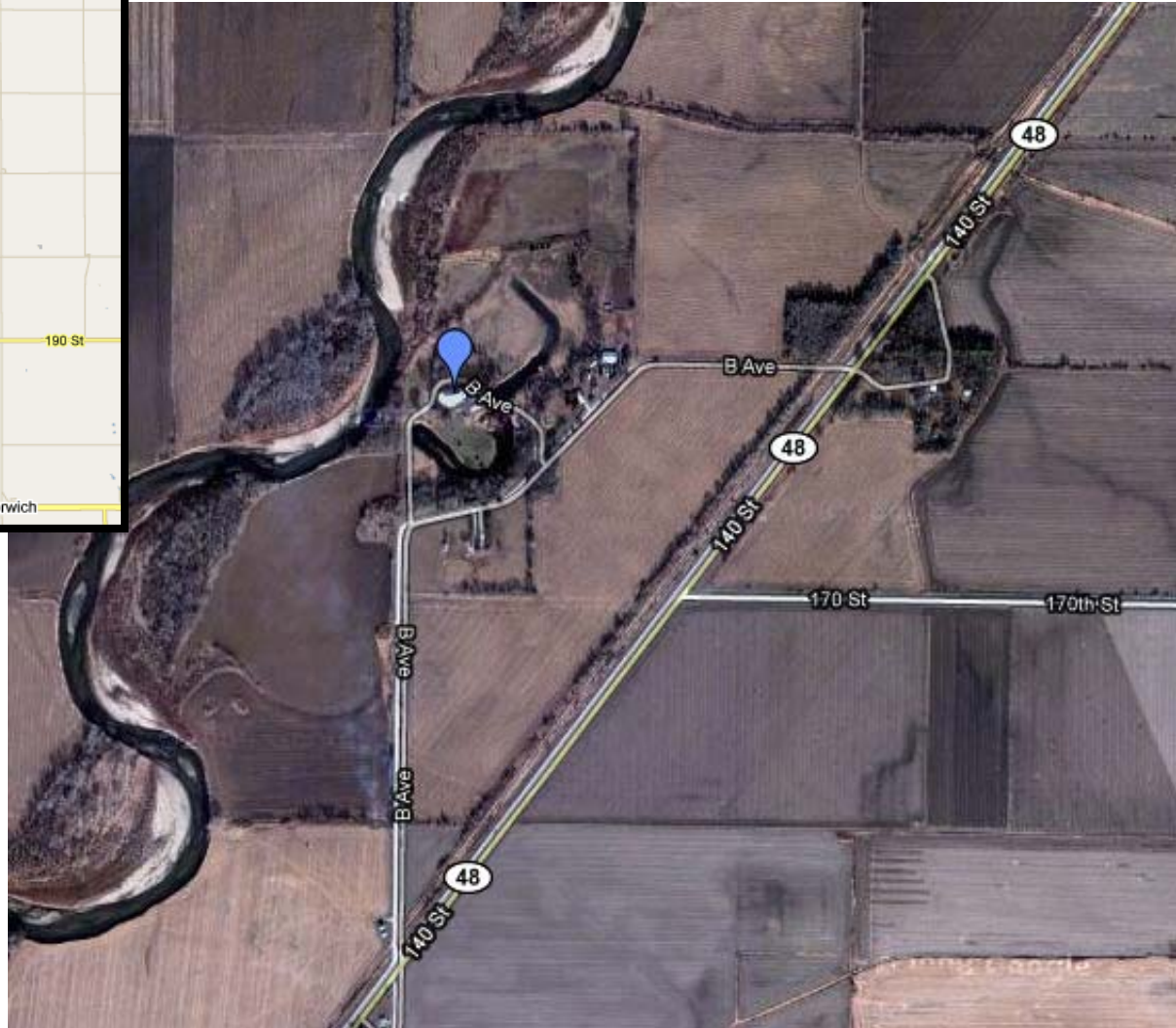
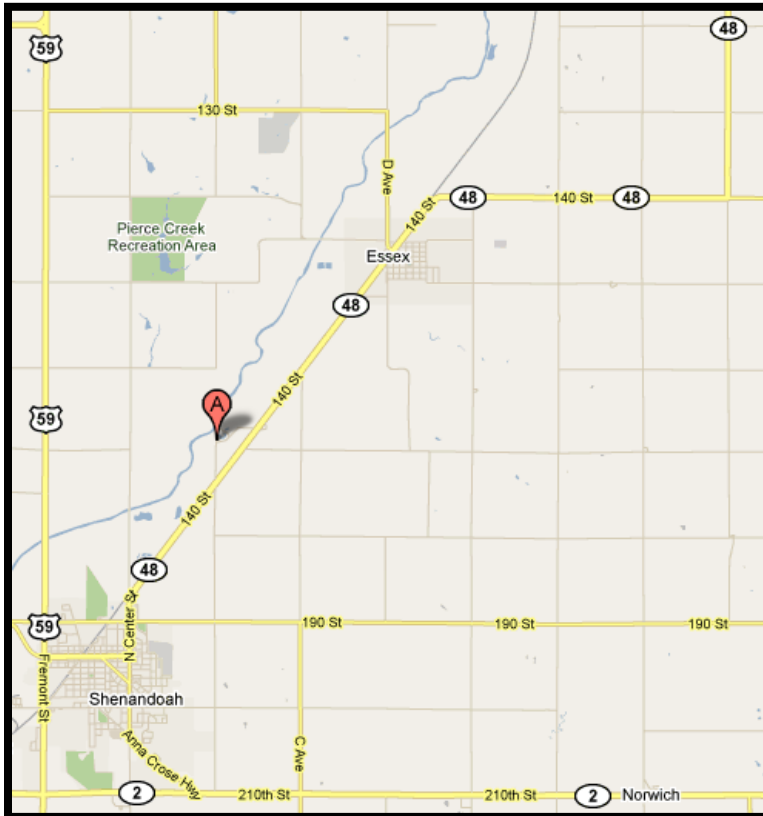
Three shuttle locations will be available for Project AWARE volunteers on Saturday, July 10.

- **Shenandoah Area Shuttle - Shuttle leaves at noon**
  - Meet Saturday, July 10 at 11:30 am at Porter's Lake Luther Center (map on page 2).
    - Bring a lunch or eat before you arrive – lunch is not provided and shuttle will not stop along the way except for emergencies.
- **Des Moines Area Shuttle - Shuttle leaves at noon**
  - Meet Saturday, June 10, at 11:30 am at Des Moines Area Community College Lot L Section 5 (map on page 3).
    - Bring a lunch or eat before you arrive – lunch is not provided and shuttle will not stop along the way except for emergencies.
    - Shuttle will return to Des Moines Saturday evening, July 17.
- **Iowa City Area Shuttle - Shuttle leaves at 10:00 am**
  - Meet Saturday, July 10, at 9:30 am at University of Iowa Oakdale Campus (map on page 4).
    - Bring a lunch or money for lunch as shuttle will stop for lunch along the way.
    - Shuttle will return to Iowa City Saturday evening, July 17.

# Project AWARE Shenandoah Area Shuttle Location Map

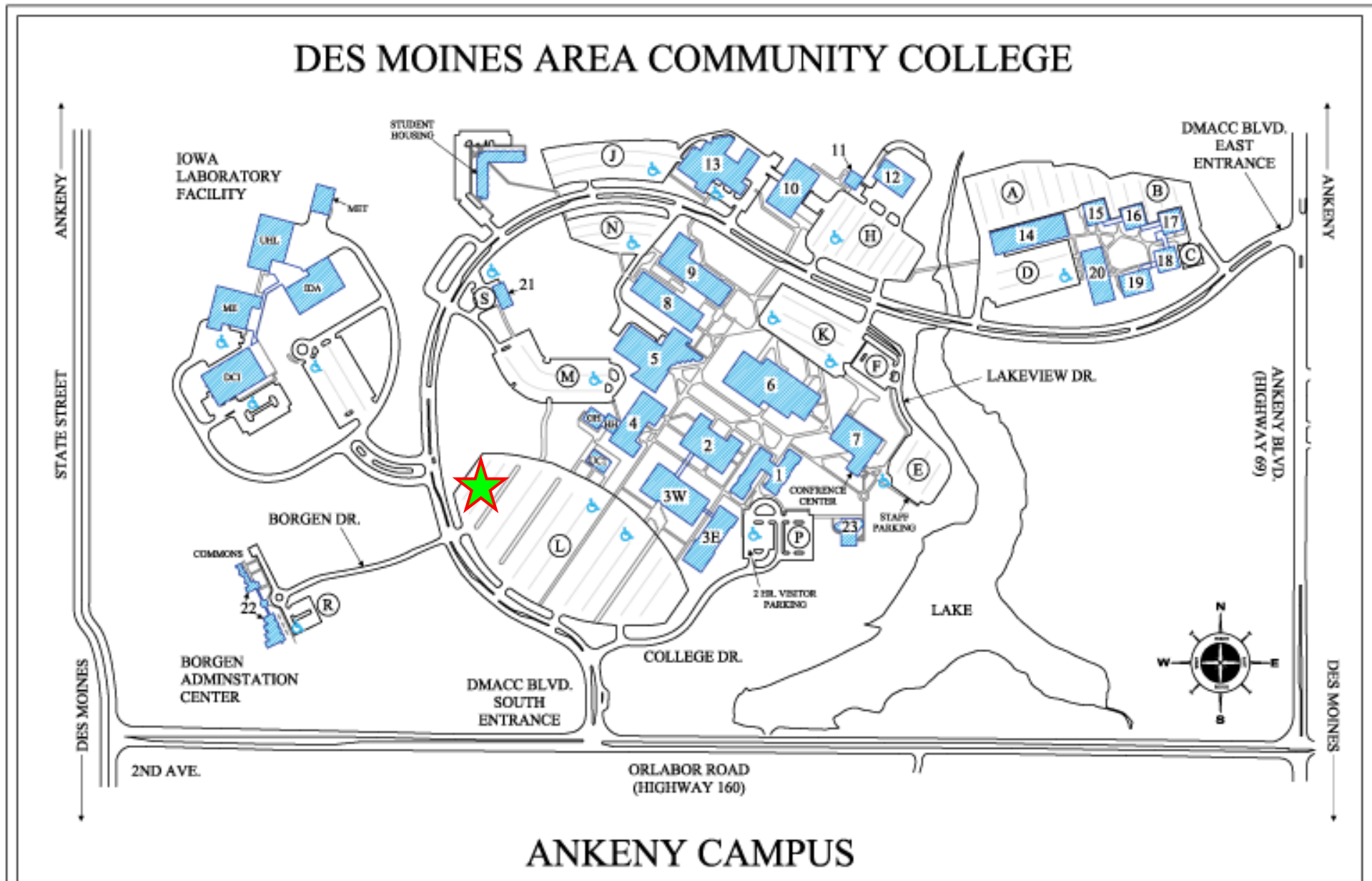
Porter's Lake Lutheran Center  
1695 B. Ave., Shenandoah, Iowa 51601

Porter's Lake Lutheran Founders, Inc. is not responsible for lost, stolen, or vandalized items or damage from tree limbs, storms, natural and/or environmental damages, or other acts of God. If you choose to leave your vehicle here, you choose to do so at your own risk.



# Project AWARE Des Moines Area Shuttle Location Map

DMACC Ankeny Campus Lot L  
2006 South Ankeny Boulevard, Ankeny, Iowa 50023



Lot L is the largest parking lot on campus. AWARE Parking is on the northwest side of Lot L Section 5 (see star). Des Moines Area Community College is not responsible for lost, stolen, or vandalized items or damage from tree limbs, storms, natural and/or environmental damages, or other acts of God. If you choose to leave your vehicle here, you choose to do so at your own risk.

# Project AWARE Iowa City Shuttle Location Map

Parking lot is on the east side of Oakdale Hall.

The University of Iowa is not responsible for lost, stolen, or vandalized items or damage from tree limbs, storms, natural and/or environmental damages, or other acts of God. If you choose to leave your vehicle here, you choose to do so at your own risk.

