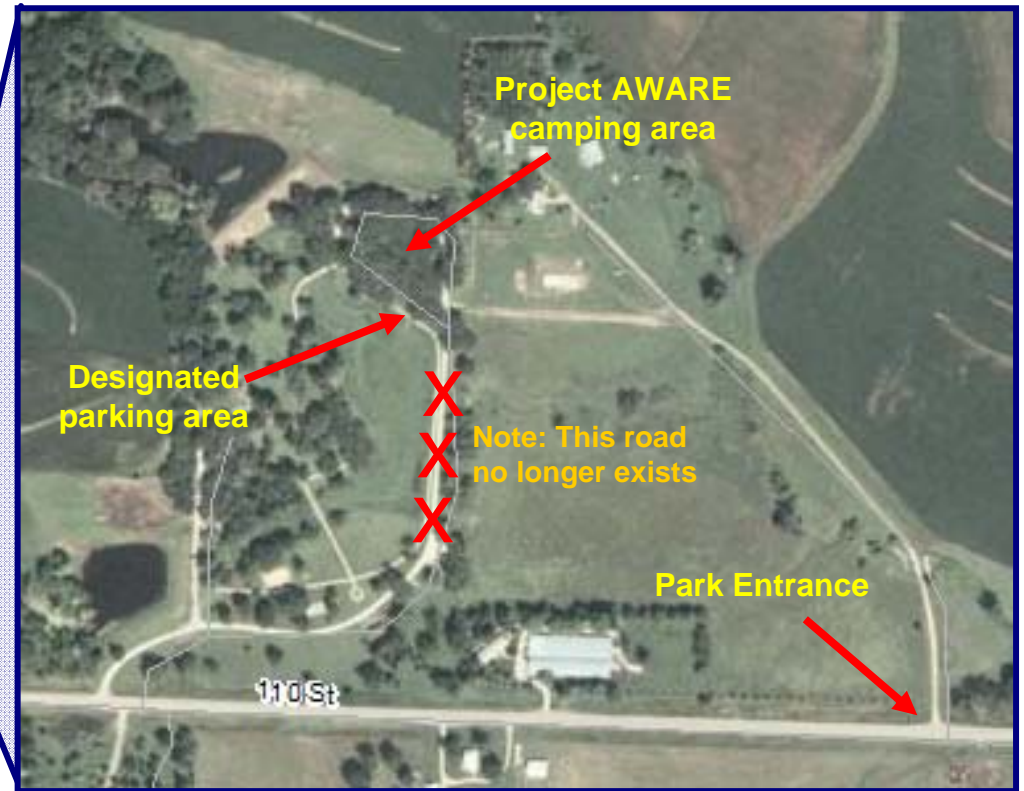
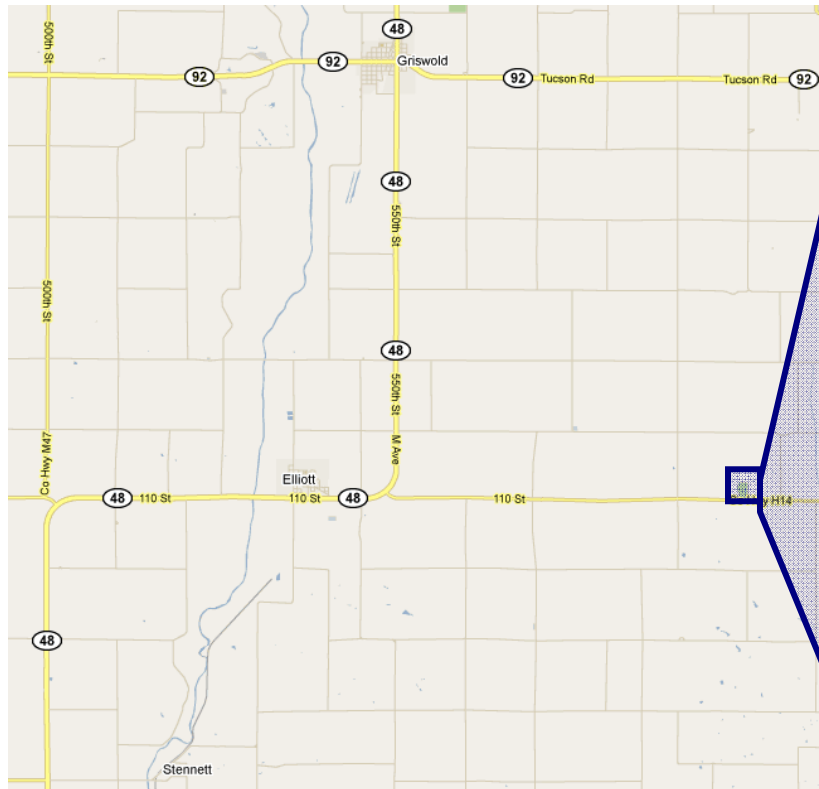


Pilot Grove Park (Montgomery County, east of Elliott)

Entrance is at 2821 110th St., Elliott, IA 51532-5008

Park just off the campground road (don't block traffic flow) as near the campground kiosk in the southeast corner of the campground as possible



The Montgomery County Conservation Board is not responsible for lost, stolen, or vandalized items or damage from tree limbs, storms, natural and/or environmental damages, or other acts of God. If you choose to leave your vehicle here, you choose to do so at your own risk.